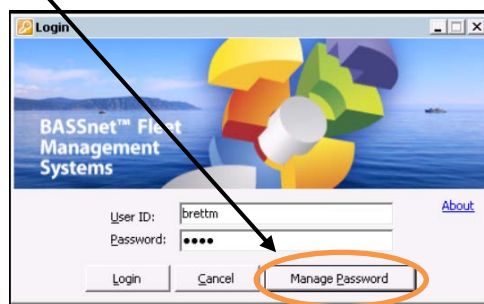


Cyber security:

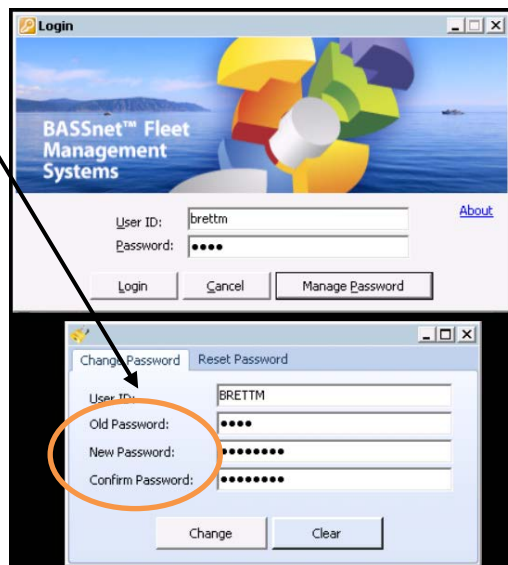
How to Change BASSNet Password

If your Password is BASS you should change it now!!!

Step 1: In the Login Page - Go to "Manage Password"



Step 2: Type in old password then type in a different new password



Strong passwords have the following characteristics:

- Contain both upper and lower-case characters (e.g. a-z, A-Z)
- Have digits and punctuation characters as well as letters e.g. 0-9, !@#\$%^&*()_+|~- =\`{}[]:”;’<>?;,./)
- Is not a word in any language, slang, dialect, jargon, etc
- Are not based on personal information, names of family, etc
- Passwords should never be written down or stored on-line

Try to create passwords that can be easily remembered. **Do not share your password with others**